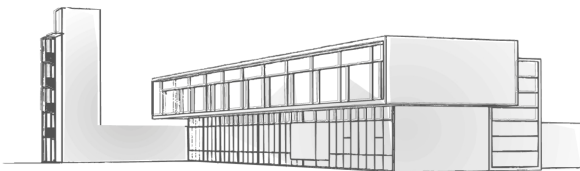
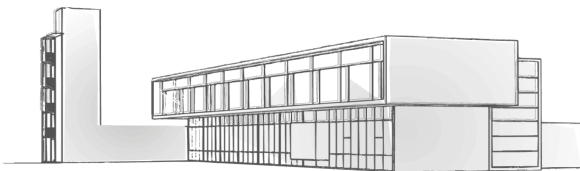


| Gesamttabelle | | | | |
|----------------------|------------------|-------------|---------------|---------------|
| Rang | Feuerwehr | Zeit | Fehler | Punkte |
| 1 | Fontanella 1 | 16,53 | 0 | 16,53 |
| 2 | Klaus 1B | 17,65 | 0 | 17,65 |
| 3 | Schnifis 1B | 19,07 | 0 | 19,07 |
| 4 | Satteins 1 | 22,07 | 30 | 52,07 |
| 5 | Weiler 1 | 19,86 | 0 | 19,86 |
| 6 | Wolfurt 1 | 26,27 | 0 | 26,27 |
| 7 | Nenzing 1 | 25,57 | 10 | 35,57 |
| 8 | Tumpen 1 | 25,92 | 20 | 45,92 |
| 9 | Röns 2 | 19,61 | 0 | 19,61 |
| 10 | Schnifis 1A | 20,05 | 0 | 20,05 |
| 11 | Schnifis 2A | 20,07 | 0 | 20,07 |
| 12 | Thüringen 1 | 20,25 | 0 | 20,25 |
| 13 | Großdorf 1 | 21,31 | 0 | 21,31 |
| 14 | Düns 1B | 22,60 | 0 | 22,60 |
| 15 | Ludesch 2 | 21,60 | 10 | 31,60 |
| 16 | Bludesch 1 | 17,95 | 30 | 47,95 |
| 17 | Röthis 1 | 19,72 | 0 | 19,72 |
| 18 | Thüringerb. 1 | 19,85 | 0 | 19,85 |
| 19 | Lustenau 3A | 19,97 | 0 | 19,97 |
| 20 | Sonntag 1 | 20,07 | 0 | 20,07 |
| 21 | Laterns 1B | 20,45 | 0 | 20,45 |
| 22 | Ludesch 1B | 20,50 | 0 | 20,50 |
| 23 | Schnifis 2B | 20,76 | 0 | 20,76 |
| 24 | Silbertal 1A | 20,80 | 0 | 20,80 |
| 25 | Düns 1A | 20,93 | 0 | 20,93 |
| 26 | Klaus 1A | 21,09 | 0 | 21,09 |
| 27 | Frastanz 1 | 21,22 | 0 | 21,22 |
| 28 | Rankweil 1 | 21,85 | 0 | 21,85 |
| 29 | Zwischenw. 1 | 21,92 | 0 | 21,92 |
| 30 | Lustenau 3B | 22,62 | 0 | 22,62 |
| 31 | Sonntag 2 | 22,66 | 0 | 22,66 |
| 32 | Vaduz 1 | 24,22 | 0 | 24,22 |
| 33 | Blons 1 | 24,26 | 0 | 24,26 |
| 34 | Gurtis 1 | 26,15 | 0 | 26,15 |
| 35 | Thüringen 3 | 26,19 | 0 | 26,19 |
| 36 | Schnifis 3 | 26,22 | 0 | 26,22 |
| 37 | Abschnitt-44 1 | 26,46 | 0 | 26,46 |
| 38 | Höchst 1 | 26,63 | 0 | 26,63 |
| 39 | Thüringen 2 | 26,69 | 0 | 26,69 |
| 40 | Laterns 1A | 28,11 | 0 | 28,11 |
| 41 | Schlins 1 | 28,55 | 0 | 28,55 |
| 42 | Ludesch 1A | 18,92 | 10 | 28,92 |
| 43 | Göfis 1 | 29,72 | 0 | 29,72 |
| 44 | Zumtobel 1 | 30,60 | 0 | 30,60 |



| | | | | |
|----|----------------|-------|----|-------|
| 45 | Sibratsgfall 1 | 21,51 | 10 | 31,51 |
| 46 | Abschnitt-44 2 | 35,16 | 0 | 35,16 |
| 47 | Lochau 1 | 35,83 | 0 | 35,83 |
| 48 | Bings-Stallehr | 27,55 | 10 | 37,55 |
| 49 | Röns 1 | 17,86 | 20 | 37,86 |

| Tabelle Grunddurchgang | | | | |
|-------------------------------|----------------|-------|--------|--------|
| Rang | Feuerwehr | Zeit | Fehler | Punkte |
| 1 | Röns 2 | 16,01 | 0 | 16,01 |
| 2 | Fontanella 1 | 17,41 | 0 | 17,41 |
| 3 | Satteins 1 | 17,79 | 0 | 17,79 |
| 4 | Düns 1B | 17,81 | 0 | 17,81 |
| 5 | Schnifis 2A | 18,02 | 0 | 18,02 |
| 6 | Ludesch 2 | 18,22 | 0 | 18,22 |
| 7 | Klaus 1B | 18,49 | 0 | 18,49 |
| 8 | Tumpen 1 | 18,53 | 0 | 18,53 |
| 9 | Schnifis 1B | 18,61 | 0 | 18,61 |
| 10 | Schnifis 1A | 18,63 | 0 | 18,63 |
| 11 | Großdorf 1 | 18,84 | 0 | 18,84 |
| 12 | Weiler 1 | 18,86 | 0 | 18,86 |
| 13 | Nenzing 1 | 19,17 | 0 | 19,17 |
| 14 | Bludesch 1 | 19,18 | 0 | 19,18 |
| 15 | Wolfurt 1 | 19,31 | 0 | 19,31 |
| 16 | Thüringen 1 | 19,44 | 0 | 19,44 |
| 17 | Röthis 1 | 19,72 | 0 | 19,72 |
| 18 | Thüringerb. 1 | 19,85 | 0 | 19,85 |
| 19 | Lustenau 3A | 19,97 | 0 | 19,97 |
| 20 | Sonntag 1 | 20,07 | 0 | 20,07 |
| 21 | Laterns 1B | 20,45 | 0 | 20,45 |
| 22 | Ludesch 1B | 20,50 | 0 | 20,50 |
| 23 | Schnifis 2B | 20,76 | 0 | 20,76 |
| 24 | Silbertal 1A | 20,80 | 0 | 20,80 |
| 25 | Düns 1A | 20,93 | 0 | 20,93 |
| 26 | Klaus 1A | 21,09 | 0 | 21,09 |
| 27 | Frastanz 1 | 21,22 | 0 | 21,22 |
| 28 | Rankweil 1 | 21,85 | 0 | 21,85 |
| 29 | Zwischenw. 1 | 21,92 | 0 | 21,92 |
| 30 | Lustenau 3B | 22,62 | 0 | 22,62 |
| 31 | Sonntag 2 | 22,66 | 0 | 22,66 |
| 32 | Vaduz 1 | 24,22 | 0 | 24,22 |
| 33 | Blons 1 | 24,26 | 0 | 24,26 |
| 34 | Gurtis 1 | 26,15 | 0 | 26,15 |
| 35 | Thüringen 3 | 26,19 | 0 | 26,19 |
| 36 | Schnifis 3 | 26,22 | 0 | 26,22 |
| 37 | Abschnitt-44 1 | 26,46 | 0 | 26,46 |
| 38 | Höchst 1 | 26,63 | 0 | 26,63 |



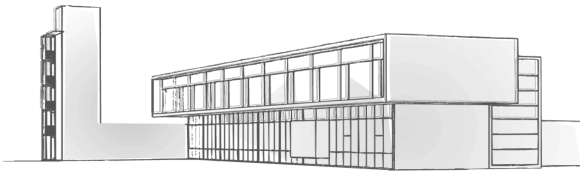
| | | | | |
|----|----------------|-------|----|-------|
| 39 | Thüringen 2 | 26,69 | 0 | 26,69 |
| 40 | Laterns 1A | 28,11 | 0 | 28,11 |
| 41 | Schlins 1 | 28,55 | 0 | 28,55 |
| 42 | Ludesch 1A | 18,92 | 10 | 28,92 |
| 43 | Göfis 1 | 29,72 | 0 | 29,72 |
| 44 | Zumtobel 1 | 30,60 | 0 | 30,60 |
| 45 | Sibratsgfäll 1 | 21,51 | 10 | 31,51 |
| 46 | Abschnitt-44 2 | 35,16 | 0 | 35,16 |
| 47 | Lochau 1 | 35,83 | 0 | 35,83 |
| 48 | Bings-Stallehr | 27,55 | 10 | 37,55 |
| 49 | Röns 1 | 17,86 | 20 | 37,86 |

Tabelle Achtelfinale

| Rang | Name | Zeit | Fehler | Punkte |
|------|--------------|-------|--------|--------|
| 1 | Weiler 1 | 17,19 | 0 | 17,19 |
| 2 | Klaus 1B | 17,44 | 0 | 17,44 |
| 3 | Nenzing 1 | 17,49 | 0 | 17,49 |
| 4 | Schnifis 1B | 17,51 | 0 | 17,51 |
| 5 | Fontanella 1 | 17,55 | 0 | 17,55 |
| 6 | Satteins 1 | 18,53 | 0 | 18,53 |
| 7 | Wolfurt 1 | 19,11 | 0 | 19,11 |
| 8 | Tumpen 1 | 19,55 | 0 | 19,55 |
| 9 | Röns 2 | 19,61 | 0 | 19,61 |
| 10 | Schnifis 1A | 20,05 | 0 | 20,05 |
| 11 | Schnifis 2A | 20,07 | 0 | 20,07 |
| 12 | Thüringen 1 | 20,25 | 0 | 20,25 |
| 13 | Großdorf 1 | 21,31 | 0 | 21,31 |
| 14 | Düns 1B | 22,60 | 0 | 22,60 |
| 15 | Ludesch 2 | 21,60 | 10 | 31,60 |
| 16 | Bludesch 1 | 17,95 | 30 | 47,95 |

Tabelle Viertelfinale

| Rang | Feuerwehr | Zeit | Fehler | Punkte |
|------|--------------|-------|--------|--------|
| 1 | Schnifis 1B | 15,95 | 0 | 15,95 |
| 2 | Fontanella 1 | 17,85 | 0 | 17,85 |
| 3 | Klaus 1B | 18,43 | 0 | 18,43 |
| 4 | Satteins 1 | 19,08 | 0 | 19,08 |
| 5 | Weiler 1 | 19,86 | 0 | 19,86 |
| 6 | Wolfurt 1 | 26,27 | 0 | 26,27 |
| 7 | Nenzing 1 | 25,57 | 10 | 35,57 |
| 8 | Tumpen 1 | 25,92 | 20 | 45,92 |



| Halbfinale | | | | |
|-------------------|--------------|-------|--------|--------|
| Rang | Feuerwehr | Zeit | Fehler | Punkte |
| 1 | Fontanella 1 | 17,47 | 0 | 17,47 |
| 2 | Klaus 1B | 17,75 | 0 | 17,75 |
| 3 | Satteins 1 | 19,19 | 0 | 19,19 |
| 4 | Schnifis 1B | 17,03 | 20 | 37,03 |

| kl. Finale | | | | |
|-------------------|-------------|-------|--------|--------|
| Rang | Feuerwehr | Zeit | Fehler | Punkte |
| 1 | Schnifis 1B | 19,07 | 0 | 19,07 |
| 2 | Satteins 1 | 22,07 | 30 | 52,07 |

| Finale 1 | | | | |
|-----------------|--------------|-------|--------|--------|
| Rang | Feuerwehr | Zeit | Fehler | Punkte |
| 1 | Fontanella 1 | 18,82 | 0 | 18,82 |
| 2 | Klaus 1B | 18,55 | 20 | 38,55 |

| Finale 2 | | | | |
|-----------------|--------------|-------|--------|--------|
| Rang | Feuerwehr | Zeit | Fehler | Punkte |
| 1 | Klaus 1B | 17,65 | 0 | 17,65 |
| 2 | Fontanella 1 | 16,53 | 0 | 16,53 |